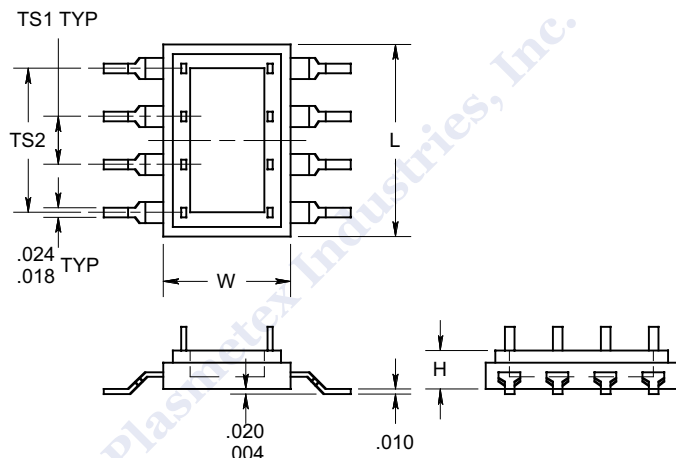
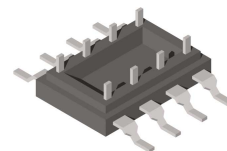


## DUAL-IN-LINE HEADERS

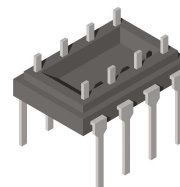


PART NO.	NO. OF TERMINALS	W	L	H	TS1	TS2	COVER HEIGHTS							
6-304	4	.265	.300	.080	.200	.200	.115	.120	.150	.160	.188	.200	.290	.350
6-314	4	.265	.300	.080	.200	.200								
6-324	4	.265	.300	.080	.200	.200	.115	.120	.150	.160	.188	.200	.290	.350
1926	4	.260	.190	.080	.100	.100	.140							
6-62	6	.340	.300	.080	.100	.200								
6-300	6	.265	.300	.080	.100	.200	.115	.120	.150	.160	.188	.200	.290	.350
61-6	6	.270	.300	.080	.100	.200	.120	.150	.160	.188	.290			
8	8	.420	.420	.120	.100	.300								
8-300	8	.265	.400	.080	.100	.300	.118	.150	.165	.225				
8-600	8	.570	.495	.080	.100	.300	.200	.250	.300					
81-8	8	.270	.400	.080	.100	.300								
2326	8	.265	.230	.080	.050	.150	.155							
2639	8	.260	.395	.080	.100	.300	.140							
12-300	12	.255	.655	.080	.100	.500								
14-300	14	.255	.755	.080	.100	.600	.105	.110	.120	.125	.130	.160	.185	.188
							.220	.225	.260	.200	.210			
14-301	14	.270	.800	.080	.100	.600	.110	.120	.145	.160	.188	.210	.225	
14-311	14	.300	.800	.080	.100	.600	.120	.200						
14-312	14	.265	.755	.080	.100	.600	.110	.120	.160					
14-317	14	.265	.755	.080	.100	.600	.110	.120	.160					
14-600	14	.575	.800	.080	.100	.600	.165	.188						
14-601	14	.575	.800	.080	.100	.600	.165	.188						
16-300	16	.255	.855	.080	.100	.700	.115	.120	.160	.188	.210	.225		
16-600	16	.555	.855	.080	.100	.700	.120	.188	.225	.250	.300			
523-16	16	.395	1.008	.128	.100	.700	.200							
18-300	18	.255	.955	.080	.100	.800	.225							
20-300	20	.255	1.055	.080	.100	.900	.120	.160	.190					
22-300	22	.255	1.155	.080	.100	1.000	.195							
24-300	24	.255	1.255	.080	.100	1.100	.188	.225						
24-600	24	.555	1.255	.080	.100	1.100	.160	.188	.210	.225	.300			
28-300	28	.270	1.445	.080	.100	1.300	.225							
30-600	30	.555	1.555	.080	.100	1.400	.225							
30-900	30	.855	1.555	.080	.100	1.400	.225							
36-300	36	.255	1.855	.080	.100	1.700	.225							
36-600	36	.555	1.855	.080	.100	1.700	.225							
40-300	40	.255	2.055	.080	.100	1.900	.225							
40-500	40	.525	1.085	.136	.050	.950	.120							

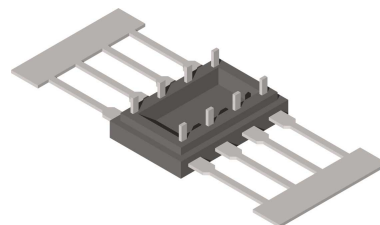
SURFACE MOUNT



THROUGH HOLE



UNFORMED LEADS



PLASTIC

MATERIAL: DAP

COLOR: BLACK

TERMINALS

MATERIAL: TINNED ALLOY 42 OR EQUIVALENT

CROSS SECTION: .010 THICK

NOTES

EACH PART NO. IN THE TABLE IS AVAILABLE IN AT LEAST 1 OF THE 3 CONFIGURATIONS ABOVE